

ABC STORAGE Cabinets with hinged doors - Series AS 20

Width 1023 mm - Depth 555 mm

In rugged, high strength cold rolled steel sheet metal, painted

With hinged doors and central locking with 3 point lock, with 2 keys

Complete with 4 internal columns with 25 mm pitch for inserting removable drawers and shelves

Suitable for various lightweight materials

As a precaution, the cabinet must be fastened to the floor or wall

Supplied with 2 brackets for floor fastening and 2 brackets for wall mounting

RAL 5012 BLUE

Height	mm	1000	2000
Code		N 9038 1000	N 9038 2000
N 9038	Each €		
Capacity	kg	600	800



ABC STORAGE Drawers and shelves - (54x36 units)

Drawers dimensions LxDxh 960x500x100

In rugged, high strength cold rolled steel sheet metal, painted with ball bearing slides

With perforated panel for fitting accessories and internal walls with slots at 17 mm intervals (pitch 17) suitable for partitioning space with longitudinal and crosswise dividers



Complete with full-length front handle

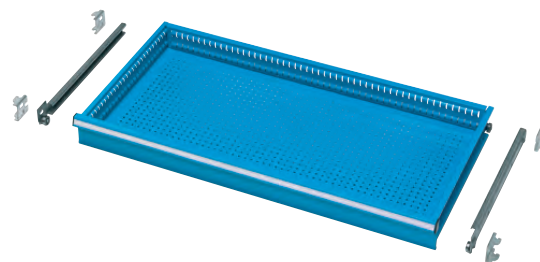
Working dimensions 906x447x85h

Side height 77 mm

N 9039/1 - 85% extension - Capacity 50 kg

N 9039/2 - full extension (100%) - Capacity 100 kg

Code N 9039 1100	N 9039/1	Each €		1
Code N 9039 2100	N 9039/2	Each €		1



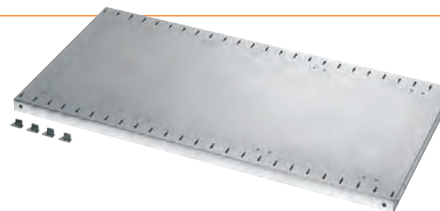
Height adjustable shelf

In galvanized steel sheet metal

Width 995 mm - Depth 500 mm - Height 30 mm - Capacity 100 kg

With 4 hooks

Code N 9041 0000	N 9041	Each €		1
------------------	---------------	--------	---	---




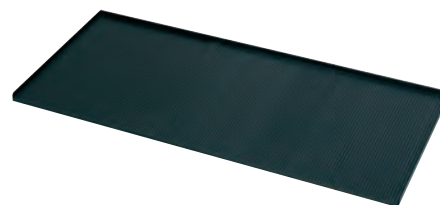
ABC STORAGE Accessories for cabinets

Countertop for Series AS 20 cabinets height 1000 mm

In sheet metal with oil-proof rubber coating with 3 edges

Dimensions LxDxh 1020x555x20 mm

Code N 9042 2000	N 9042/2	Each €		1
------------------	-----------------	--------	---	---



ABC STORAGE Complete cabinets - Series AS 20

Width 1023 mm - Depth 555 mm

In high strength cold rolled steel sheet metal, painted

Particularly suitable for offices, factories, laboratories, warehouses, workstations to store tools and materials in a tidy way

Height-adjustable galvanised shelves with 25 mm pitch

Central locking with 3 point lock, with 2 keys


RAL 5012 BLUE

Height 1000 mm

With sheet metal hinged doors

Complete with:

2 adjustable shelves N 9041 load capacity 100 kg

Code N 9043 5000	N 9043/5	Each €		1
------------------	-----------------	--------	---	---

Complete with:

1 double drawer

2 adjustable shelves N 9041 load capacity 100 kg

1 top N 9042/2

Code N 9044 0000	N 9044	Each €		1
------------------	---------------	--------	---	---

