

ABC STORAGE Corner cabinets

Width 730 mm - Depth 725 mm - Height 1000 mm

In rugged, high strength cold rolled steel sheet metal, painted
Especially useful to make the most of corners in sideboards, laboratories, shop counters etc.
Only suitable for cabinets 725 mm deep of series AS 13 - AS 75 - AS 28

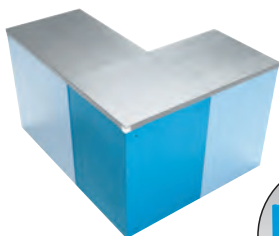
Central locking with cylinder lock

With 2 keys

As a precaution, the cabinets must be fastened to the floor or wall, especially when stacked (in this case only half capacity is allowed)

Type for external corner DRAWERS CANNOT BE INSERTED

This type of cabinet creates an external corner from the operator's position and for this reason **the corner cabinet cannot be complete with drawers**



Version for right corner

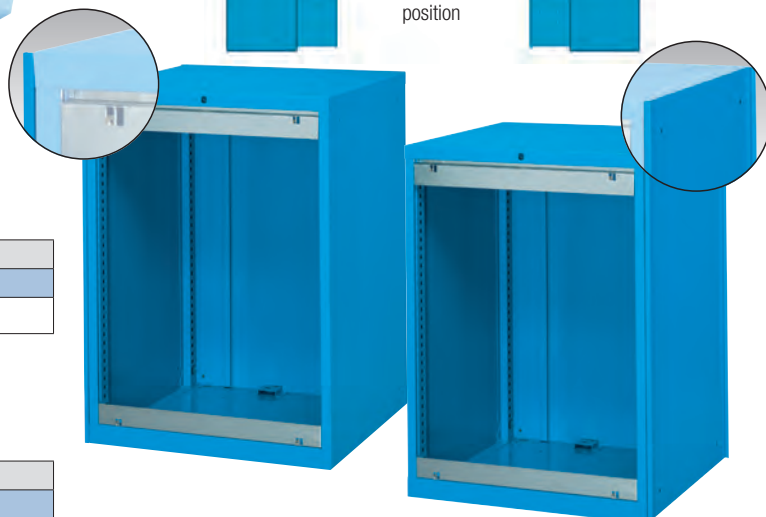
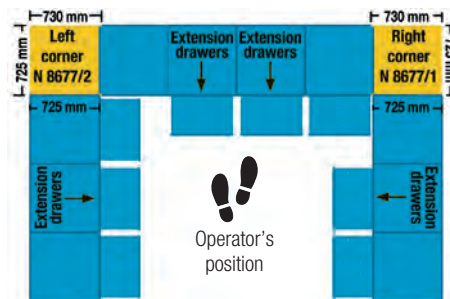
Supplied with **profile in sheet metal** to flank drawer units with depth 725 mm (36 units)

Colore	RAL	5012	9010
Code		N 8677 1000	N 8677 1001
N 8677/1	Each €		

Version for left corner

Supplied with **profile in sheet metal** to flank drawer units with depth 725 mm (36 units)

Colore	RAL	5012	9010
Code		N 8677 2000	N 8677 2001
N 8677/2	Each €		



Type for internal corner DRAWERS CAN BE INSERTED

This type of cabinet creates an internal corner from the operator's position and for this reason **the corner cabinet can be completed with drawers N 8512 and N 8513**



Version for right corner

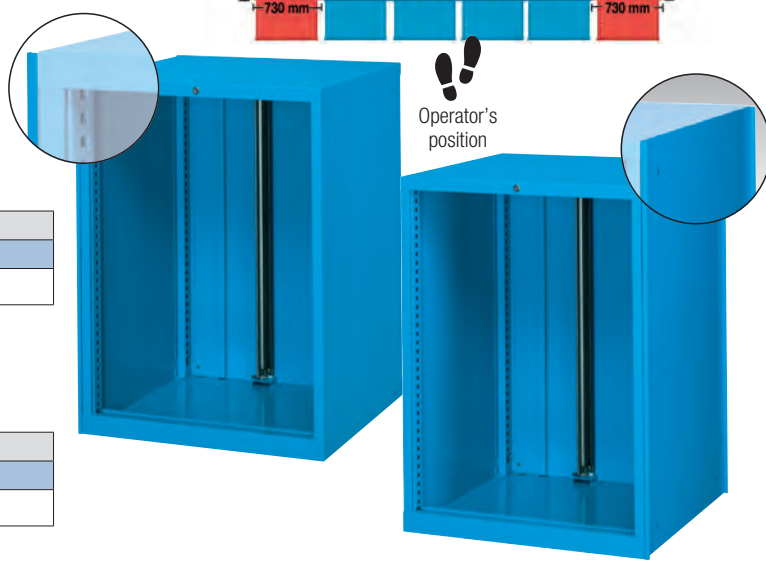
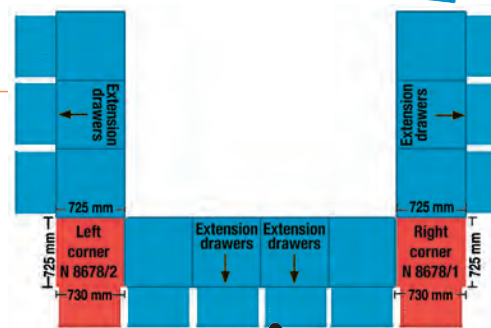
Supplied with **profile in sheet metal** to flank drawer units with depth 725 mm (36 units)

Colore	RAL	5012	9010
Code		N 8678 1000	N 8678 1001
N 8678/1	Each €		

Version for left corner

Supplied with **profile in sheet metal** to flank drawer units with depth 725 mm (36 units)

Colore	RAL	5012	9010
Code		N 8678 2000	N 8678 2001
N 8678/2	Each €		



ABC STORAGE Countertops for cabinets

In high-resistance chipboard coated with 100% pure PVC Crystal, with rounded rubber edges

Suitable for Series AS 13 - AS 75

To be used as work surface and storage area

Particularly suitable for sideboards, shop counters, warehouses, workshops, etc.

Depth 760 mm - Thickness 20 mm

Code N 8683 6000	N 8683/6	Per linear m €
------------------	----------	----------------

