

ABC STORAGE Empty cabinets - Series AS 75 (54x36 units)

Width 1023 mm - Depth 725 mm

In rugged, high strength cold rolled steel sheet metal, painted
 With safety device that allows only one drawer to open at a time
 Central locking with cylinder lock - Complete with 2 keys
 As a precaution, the cabinets must be fastened to the floor or wall, especially when stacked (in this case only half capacity is allowed)

N 8590 - Colour RAL 5012

N 8590/1 - Colour RAL 9010

Cabinet height	mm	850	1000	1325	1450
Code		N 8590 0850	N 8590 1000	N 8590 1325	N 8590 1450
N 8590 - RAL 5012	Each €				
Code		N 8591 0850	N 8591 1000	N 8591 1325	N 8591 1450
N 8591/1 - RAL 9010	Each €				
Inside height for drawers	mm	750	900	1225	1350

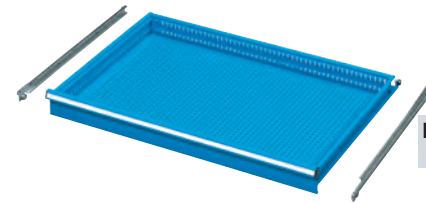


ABC STORAGE Drawers (54x36 units)

In rugged, high strength cold rolled steel sheet metal, painted
 With ball bearing slides
 With perforated panel for fitting accessories and internal walls with slots at 17 mm intervals (pitch 17) suitable for partitioning space with longitudinal and crosswise dividers
 Complete with full-length front handle with label for easy identification
 Inside width **906 mm** - Inside depth **600 mm**

Type with 85% extension - Max load capacity 60÷100 kg

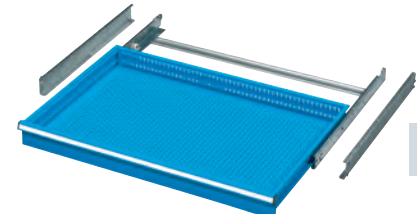
Front height	mm	50	75	100	125
Code		N 8592 0050	N 8592 0075	N 8592 0100	N 8592 0125
N 8592 - RAL 5012	Each €				
Code		N 8592 1050	N 8592 1075	N 8592 1100	N 8592 1125
N 8592/1 - RAL 9010	Each €				
Useful height	mm	36	61	86	111
Side height	mm	33	52	77	77
Capacity	kg	60	80	100	100



P
85%
Partial extension drawers

Type with full extension (100%) - Max load capacity 150 kg

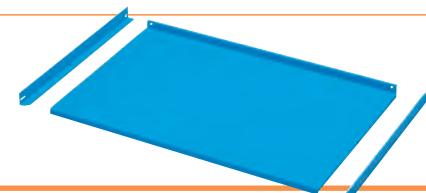
Front height	mm	75	100	125	150	200	300
Code	N 8593	0075	0100	0125	0150	0200	0300
N 8593 - RAL 5012	Each €						
Code	N 8593	1075	1100	1125	1150	1200	1300
N 8593/1 - RAL 9010	Each €						
Useful height	mm	54	79	104	129	179	279
Side height	mm	52	77	77	127	177	277



T
100%
Full extension drawers

Shelf with height adjustable - Capacity 100 kg - Dimensions LxDxh 967x618x35 mm

Code N 8595 0000	N 8595	RAL 5012	Each €		1
Code N 8595 1000	N 8595/1	RAL 9010	Each €		1



F
Fixed

ABC STORAGE Accessories for cabinets

Suitable for **Series AS 75** cabinets (54x36 units)

Bases - In painted sheet steel metal

Fixed - Dimensions LxDxh 1022x701x50 mm

Code N 8597 0050	N 8597	Each €
-------------------------	---------------	--------

For transporting drawer units

Dimensions LxDxh 200x703x100 mm - For transpallets

Code N 8597 1100	N 8597/1	Per pair €
-------------------------	-----------------	------------

Countertop in sheet metal with oil-proof rubber coating with 3 edges

Dimensions LxDxh 1023x725x20 mm

Code N 8602 0000	N 8602	Each €
-------------------------	---------------	--------



N 8602