

**ABC STORAGE Empty cabinets - Series AS 13 (36x36 units)**

Width 717 mm - Depth 725 mm

In rugged, high strength cold rolled steel sheet metal, painted  
 With safety device that allows only one drawer to open at a time  
 Central locking with cylinder lock - Complete with 2 keys  
 As a precaution, the cabinets must be fastened to the floor or wall, especially when stacked (in this case only half capacity is allowed)

**N 8510** - Colour **RAL 5012**   
**N 8511** - Colour **RAL 9010** 



Cabinet height	mm	850	1000	1150	1450	1625
<b>Code</b>	<b>N 8510 ....</b>	<b>0850</b>	<b>1000</b>	<b>1150</b>	<b>1450</b>	<b>1625</b>
<b>N 8510 - RAL 5012</b>	Each €					
<b>Code</b>	<b>N 8511 ....</b>	<b>0850</b>	<b>1000</b>	<b>1150</b>	<b>1450</b>	<b>1625</b>
<b>N 8511 - RAL 9010</b>	Each €					
Inside height for drawers	mm	750	900	1050	1350	1525

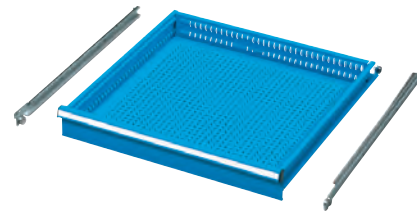
**ABC STORAGE Drawers (36x36 units)**

In rugged, high strength cold rolled steel sheet metal, painted  
 With ball bearing slides  
 With perforated panel for fitting accessories and internal walls with slots at 17 mm intervals (pitch 17) suitable for partitioning space with longitudinal and crosswise dividers  
 Complete with full-length front handle with label for easy identification  
 Inside width **600 mm** - Inside depth **600 mm**

**Type with 85% extension** - Max capacity 60÷100 kg

**N 8512** - Colour **RAL 5012**   
**N 8512/1** - Colour **RAL 9010** 

Front height	mm	50	75	100	125	150	200	300
<b>Code</b>	<b>N 8512 ....</b>	<b>0050</b>	<b>0075</b>	<b>0100</b>	<b>0125</b>	<b>0150</b>	<b>0200</b>	<b>0300</b>
<b>N 8512 - RAL 5012</b>	Each €							
<b>Code</b>	<b>N 8512 ....</b>	<b>1050</b>	<b>1075</b>	<b>1100</b>	<b>1125</b>	<b>1150</b>	<b>1200</b>	<b>1300</b>
<b>N 8512/1 - RAL 9010</b>	Each €							
Useful height	mm	36	61	86	111	136	186	286
Side height	mm	33	52	77	77	127	177	277
Capacity	kg	60	80	100	100	100	100	100

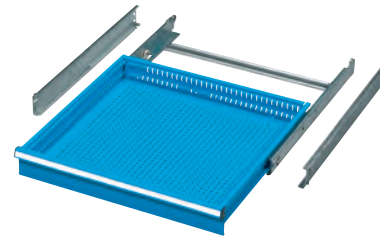


**P**  
85%  
Partial extension drawers

**Type with full extension (100%)** - Max capacity 200 kg

**N 8513** - Colour **RAL 5012**   
**N 8513/1** - Colour **RAL 9010** 



Front height	mm	75	100	125	150	200	250	300	400
<b>Code</b>	<b>N 8513 ....</b>	<b>0075</b>	<b>0100</b>	<b>0125</b>	<b>0150</b>	<b>0200</b>	<b>0250</b>	<b>0300</b>	<b>0400</b>
<b>N 8513 - RAL 5012</b>	Each €								
<b>Code</b>	<b>N 8513 ....</b>	<b>1075</b>	<b>1100</b>	<b>1125</b>	<b>1150</b>	<b>1200</b>	<b>1250</b>	<b>1300</b>	<b>1400</b>
<b>N 8513/1 - RAL 9010</b>	Each €								
Useful height	mm	54	79	104	129	179	229	279	379
Side height	mm	52	77	77	127	177	177	277	277

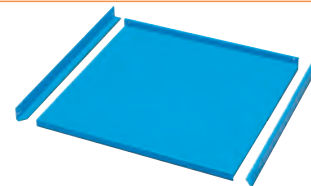


**T**  
100%  
Full extension drawers

**Height adjustable shelf**

Capacity 150 kg  
 Dimensions LxDxh 661x618x35 mm

<b>Code</b> <b>N 8515 0000</b>	<b>N 8515</b>	<b>RAL 5012</b> 	Each €
<b>Code</b> <b>N 8515 1000</b>	<b>N 8515/1</b>	<b>RAL 9010</b> 	Each €



**F**  
Fixed

**ABC STORAGE Accessories for cabinets**

Suitable for **Series AS 13** cabinets (36x36 units)

**Flap door**

With pair of slides and brackets to block the door with the key locked drawer

**Height 300 mm**



<b>Code</b> <b>N 8516 1000</b>	<b>N 8516/1</b>	Each €
--------------------------------	-----------------	--------

**Perforated panels**

In sheet steel metal with square hole 10x10 mm, pitch 38 mm  
 Suitable to tidily hang, through hooks N 8767, tools and technical drawings  
 Can be fixed to wooden surfaces  
 With fixing screws and nuts  
 Dimensions LxDxh 716x93x700 mm

<b>Code</b> <b>N 8516 4700</b>	<b>N 8516/4</b>	Each €
--------------------------------	-----------------	--------

Hooks for tool walls → N 3 pag. 937

